

Lily Farm Proposals

Public Consultation

The proposal is to create a reinterpretation of the quintessential, small Somerset farmstead.

To the West of Cattle Hill, buildings of merit are to be restored or re-imagined, with the range of new buildings reflecting the mixed farming history and agricultural vernacular. To the East, the site is to be cleared and returned to an area of soft landscape and pasture.

The sensitive transformation of Lily Farm is proposed to include:

- Restoration of the Grade II Listed Farmhouse and piggery
- A total of nine short stay holiday accommodation units, providing fourteen bedrooms
- Fourteen visitor car parking spaces
- On-site catering facilities
- Associated landscaping
- 10% Net Biodiversity Gain
- Improvements to site drainage including surface water attenuation, reducing local flood risk
- Upgrading the waste management infrastructure both on site and to neighbouring properties to reduce nutrients entering local watercourses.

The proposals are to be connected to The Newt in Somerset by an existing private track which does not cross any public highway. They are less than 0.6 miles apart. It will take around 15 minutes to walk to the heart of the Emily Estate from Lily Farm, and less by bike or buggy.

The Lily Farm site is otherwise remote with the nearest neighbouring dwelling located some 200 metres away to the North. While connected to the wider estate, the proposals at Lily Farm are to be self-contained.



RICHARD PARR
ASSOCIATES

- 1 Lily Farm - West Site
- 2 Lily Farm - East Site
- 3 Buggy Path
- 4 Hadspen House
- 5 Parabola
- 6 Threshing Barn
- 7 Beezantium
- 8 The Story of Gardening
- 9 Dovecote
- 10 Roman Villa Experience
- 11 The Farmyard
- 12 Welham Cottages
- 13 Welham Farm
- 14 Searts



SITE LOCATION PLAN

KEY:
SITE BOUNDARY





EXISTING SITE PLAN



PROPOSED SITE PLAN

KEY:

— SITE BOUNDARY



VIEWPOINT





VIEWPOINT A - EXISTING ILLUSTRATIVE VIEW



VIEWPOINT A - PROPOSED ILLUSTRATIVE VIEW



VIEWPOINT B - EXISTING ILLUSTRATIVE VIEW



VIEWPOINT B - PROPOSED ILLUSTRATIVE VIEW



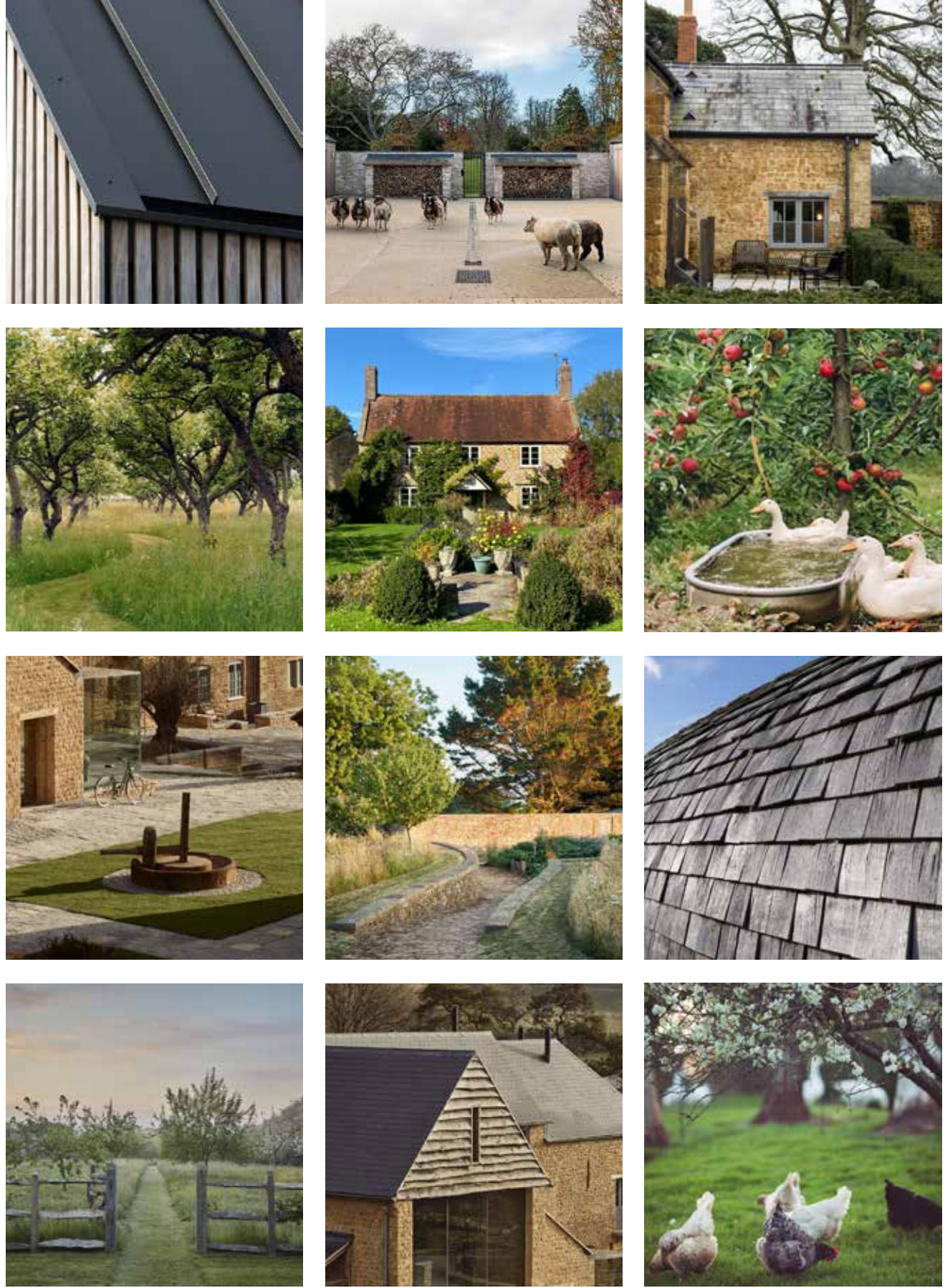
EXISTING SITE CHARACTER



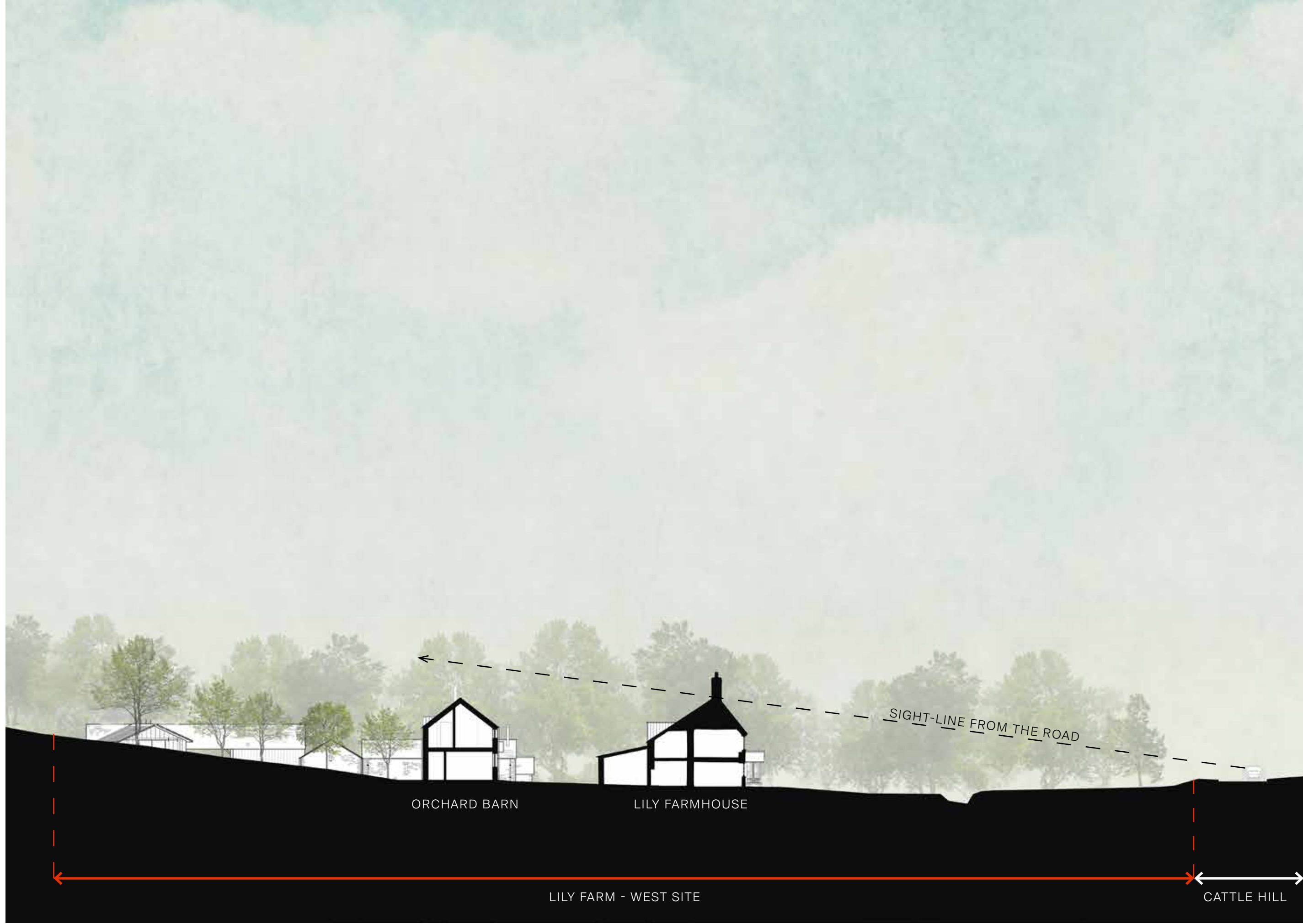
VIEWPOINT C - EXISTING ILLUSTRATIVE VIEW



VIEWPOINT C - PROPOSED ILLUSTRATIVE VIEW



PROPOSED SITE CHARACTER



SITE SECTION ILLUSTRATING THE SIGHT-LINE FROM CATTLE HILL



ACCESS & SERVICING

KEY:
 SITE BOUNDARY

