

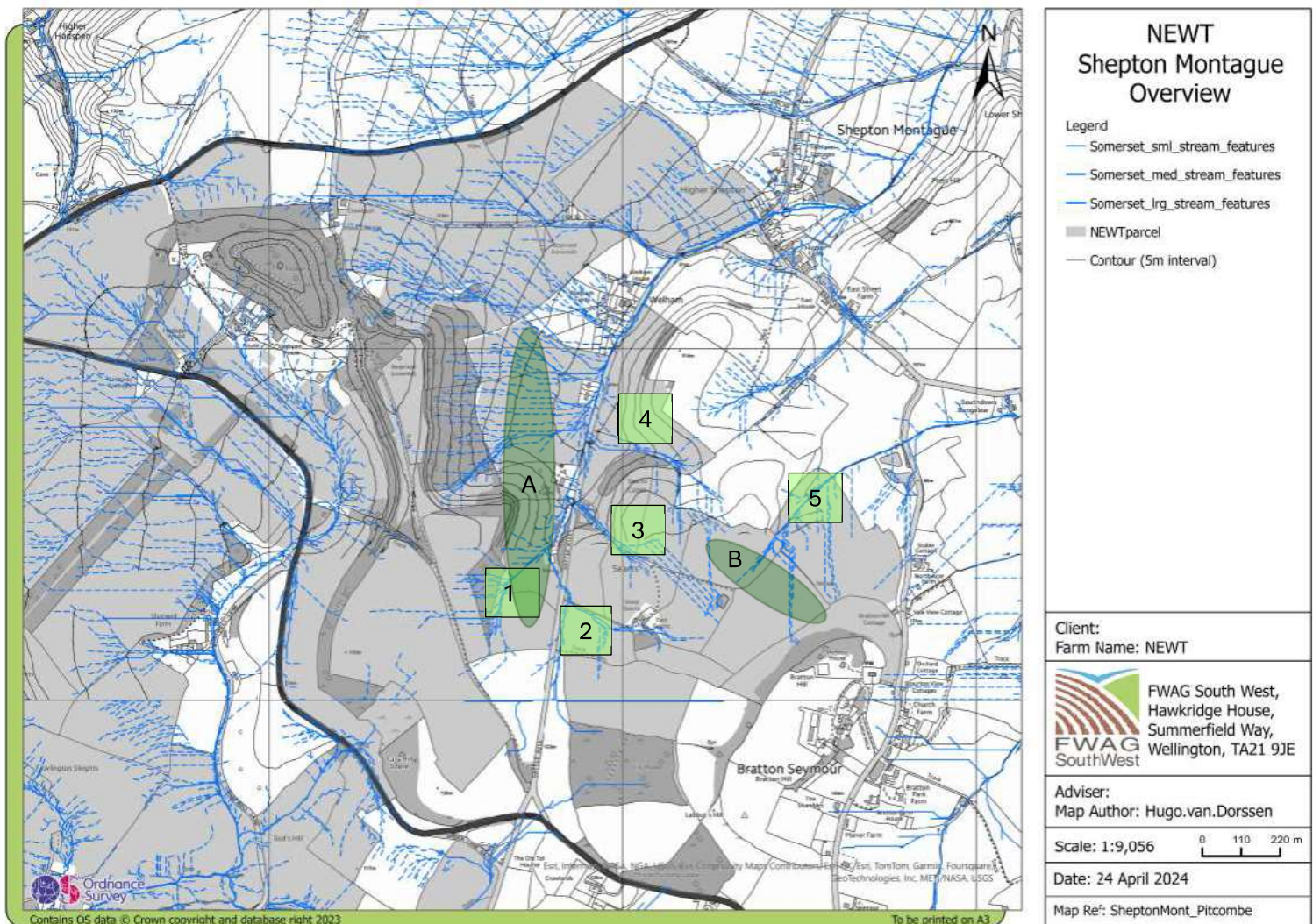
NEWT, Castle Cary, Somerset

Proposal to reduce the flooding in Shepton Montague.

River Pitt catchment

Aim: Slow, Spread, Sink.

Five key projects highlighted



Overview

1. Bund and extending woodland.
2. Field bund and blocking ditches.
3. Blocking ditches and creating swales
4. Cross slope hedgerow
5. Wetland creation

Other projects

- a. Soil compaction assessment (FWAG can assess 5 x fields funding under SRA)
- b. Buffer strips on arable land